

An Icon Reimagined



Dusit Thani

BANGKOK



The Legacy Continues Gracious, *Now and Always*

In 1970, the opening of Dusit Thani Bangkok set a new standard for hospitality in Thailand. Now, a new era begins, rooted in heritage, reimagined for the future, and as always, gracious.

For 50 years, the flagship hotel presided over Lumpini Park and served as the community's meeting place, a hub in the heart of

the city, where milestones were celebrated, and memories were made.

In 2024, Dusit Thani Bangkok reopens in the same location to give a new generation of discerning travellers and locals a place to gather once again. The transformed flagship hotel brings classic grandeur to life and invites guests and visitors to experience its elegant hotel charm through a modern lens.



Lobby

This bold new chapter is inspired by an illustrious legacy, with artful architectural nuances that harken back to the hotel's golden years. As we step into the future with design, flavours, and experiences that offer a forward-looking perspective, our gracious signature service will remain understated and refined as Dusit Thani Bangkok sets the scene for new milestones and memories.



Dusit Thani Bangkok 1970



Redefining Luxury in Distinctive *Park-View* Accommodations

The experience begins at the Sky Lobby, offering personalised services that include a seamless check-in, complete with a Thai welcome ritual. Sweeping panoramas of Lumpini Park from the 39th floor will orientate new arrivals as they settle in.

Our Deluxe and Premier Rooms set a new standard for city-centre stays. Classic details decorate the ample spaces to evoke the timeless elegance of Dusit Thani Bangkok's original designs, while colourful accents orientate guests in a truly Thai setting. Full-width windows offer uninterrupted views of the magnificent Lumpini Park.



Deluxe Room

Club Rooms and Suite Stays

Offering a serene sanctuary in the city, Club Rooms and Suites at Dusit Thani Bangkok welcome guests with classic grandeur, luxurious modern comforts, and exclusive access to the Members Club on level 39, where bespoke experiences await.

With 50 sq. m., Club Rooms combine elegant living with members-only benefits for guests in search of a sophisticated stay. With a choice of king or twin beds and the option of a corner location, these stylish accommodations offer a unique experience with Club access.

The Club Suite is set across 100 sq. m. with a separate living area overlooking the park. For loft living in Bangkok, the 120 sq. m. two-floor Duplex Suite features a grand spiral staircase and Lumpini vistas from the bed and bathroom. The ultimate urban retreat, the Terrace Suite boasts 170 sq.m. of luxurious living space and a vast 300 sq. m. outdoor terrace with a hot tub. Set across three bays, each with a full-width park-facing window, the 150 sq. m. Rattanakosin Suite features a chef's table, dining room and bar - perfect for elegant entertaining. With two living spaces, a meeting room, a large work room, and state-of-the-art entertainment capabilities, the five-bay 250 sq. m. Dusit Thani Suite is the epitome of opulence.



Dusit Thani Suite



Duplex Suite

Gather *Once Again* for Distinctive Dining

For 50 years, Dusit Thani's dining destinations were at the heart of Bangkok society – engagements were announced, deals were signed, and anniversaries were celebrated.

In this new chapter, Dusit Thani Bangkok re-establishes itself as a landmark in the city's culinary scene with a selection of restaurants and bars, each a destination in itself. We invite Bangkok once again to gather, connect, and celebrate.

- **Cannubi by Umberto Bombana:** Italian culinary masterpieces pair with exquisite vintages for truly fine wine-and-dining experiences crafted by a renowned 3-Michelin-starred chef.
- **Pavilion:** A theatrical Thai and Chinese kitchen where culinary cultures intertwine with authentic flavours and flair.
- **Spire Rooftop Bar:** Unusual, modern libations capture Bangkok's vibrant spirit on an iconic rooftop with stunning views of the city skyline.
- **1970 Bar:** A craft-spirit and cocktail bar paying homage to the timeless opulence and glamour of the iconic 1970s.
- **Grand Lobby Bar:** A grand tea salon and bar showcasing meticulously curated delicacies and Thai heritage confectionery.
- **Dusit Gourmet:** An artisanal café where epicureans delight in all-time favourites, handcrafted pâtisseries and gourmet specialities.





Spire Rooftop Bar



Baan Dusit Thani

Classic and Contemporary Tastes Blend at Baan Dusit Thani

Hidden away in a lush landscaped garden, Baan Dusit Thani presents refined flavours and gastronomic revelations amid the splendour of a lovingly restored, historic home. Just a short walk from the hotel, this singular setting fuses classic elegance with contemporary creativity and creates a unique backdrop for memorable dining experiences.



Benjarong

The exotic flavours of South America sizzle by the pool at Nómada. Classic Vietnamese cuisine is served in a modern dining space bursting with character at Thien Duong. Benjarong invites diners to linger over royal Thai recipes in a stately setting. Meanwhile, Dusit Gourmet remains synonymous with quality teas, coffees, and delicious baked goods.

- Nómada Bangkok:** South American pool lounge
- Benjarong:** Aristocratic Thai cuisine
- Thien Dong:** Unconventional Vietnamese dining
- Dusit Gourmet:** Classic cafe and deli selections



Discover a *Holistic* Approach to Wellbeing

As the ancient Sanskrit word for “a garden in heaven,” Devarana represents a relaxing respite, a tranquil space in which to rebalance and restore.

Comprising Devarana Spa, an infinity pool, fitness centre, and Sanctuary Lounge, Devarana Wellness is a holistic approach

to wellbeing – an invitation to indulge in blissful experiences, connect with the self, and explore new methodologies.

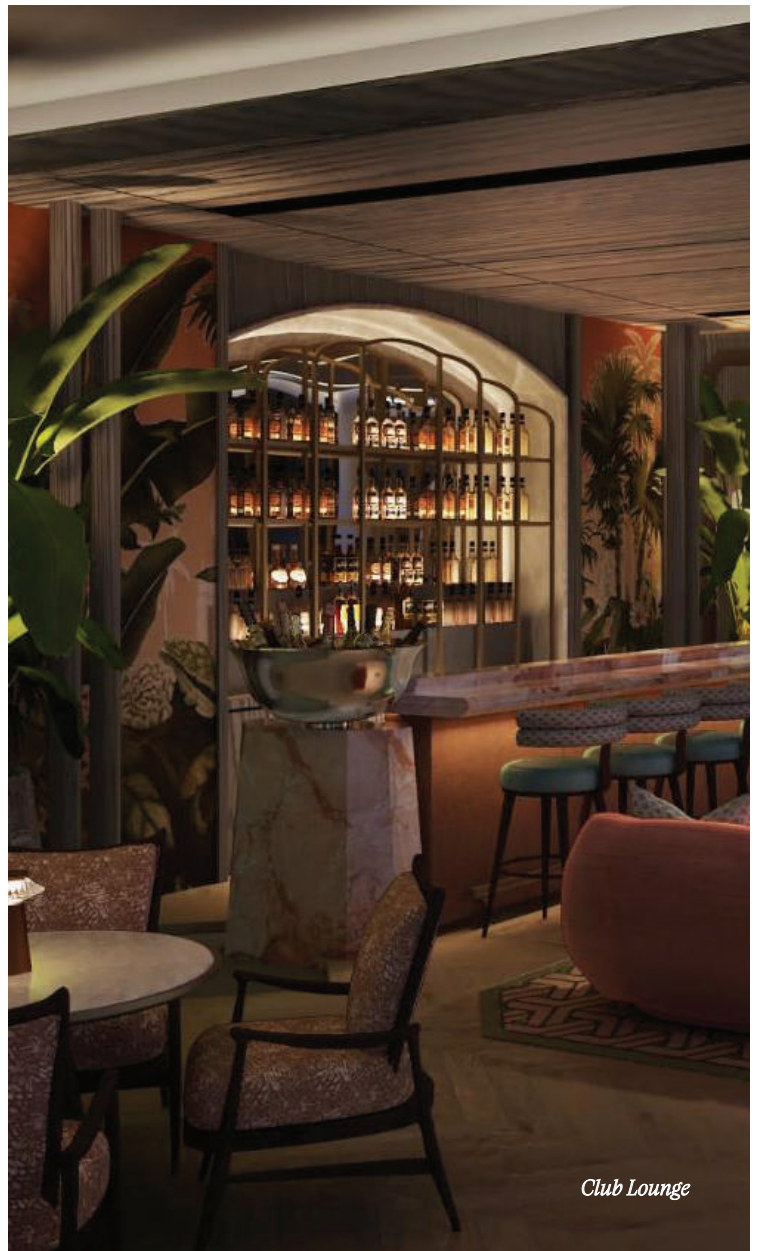
Guests reinvigorate with energising workouts, unwind with park-view swims, relax with ancient treatments and modern therapies, or discover bliss with sound therapy and reiki.



Devarana Wellness

An Exclusive Hideaway for *Club* and *Suite* Guests

On level 39, the Club Lounge at Dusit Thani Bangkok is an urban sanctuary where sophisticated design blends with tailored experiences, from a bespoke breakfast experience on an alfresco dining terrace to a signature Champagne degustation and caviar pairing. Every detail is designed to create an atmosphere of true respite and ensure every stay is unique.



Club Lounge



Devarana Sanctuary



Napalai Grand Ballroom

The *Epitome* of Elegant Events in Bangkok

With a history of bringing people together, Dusit Thani Bangkok once again sets the scene for memorable moments, extravagant gatherings and pivotal parties in state-of-the-art spaces that lend an air of classic grandeur.

Grand Ballroom

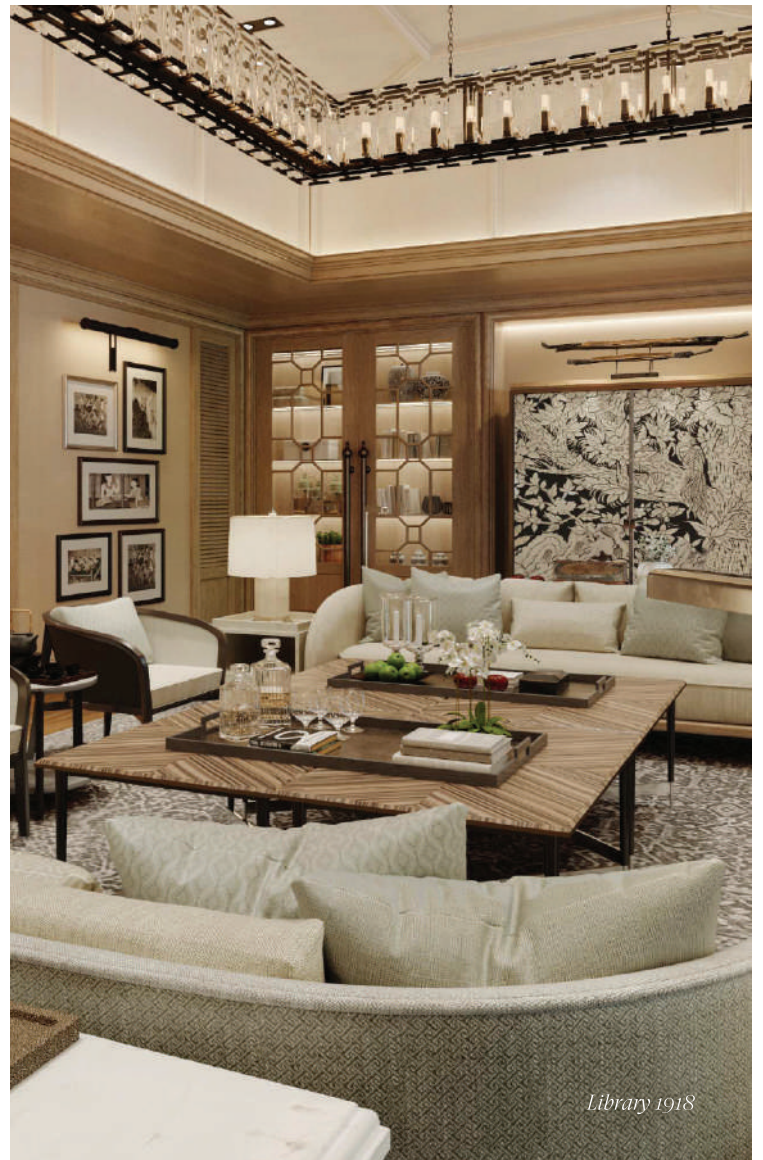
Designed for glamorous galas, lavish weddings, and extravagant events, the Napalai Grand Ballroom accommodates up to 1,400 guests and features a vast full-width window with views of Lumpini Park.

Meeting Spaces

Vimarn Ballroom, Suriya Room and Silom Room offer flexible spaces for intimate board meetings, annual general meetings, elegant receptions, or smaller stylish gatherings.

Heritage Floor

With a refined Thai sensibility, the Lumpini Room connects to Lumpini Lawn for indoor-outdoor, day-to-dusk ceremonies and celebrations overlooking the park.



Library 1918



Tiara Room

Dynamic Spaces and Services for *Memorable Moments*

With unique experiences, gastronomic adventures, unforgettable gatherings, and exquisite culinary offerings, a new selection of diverse spaces and distinctive services invite our guests to celebrate in style.

Floor 39

With skyline and park views, a full kitchen, wine cellar, dining and lounge areas, Tiara Room and High Energy Zone are unique spaces for one-of-a-kind events, launches, or classes.

Suites

Exclusive launches, after-parties or chef's tables feel extra exclusive in a suite like the Terrace Suite with its vast terrace with a private Jacuzzi overlooking the park and city.

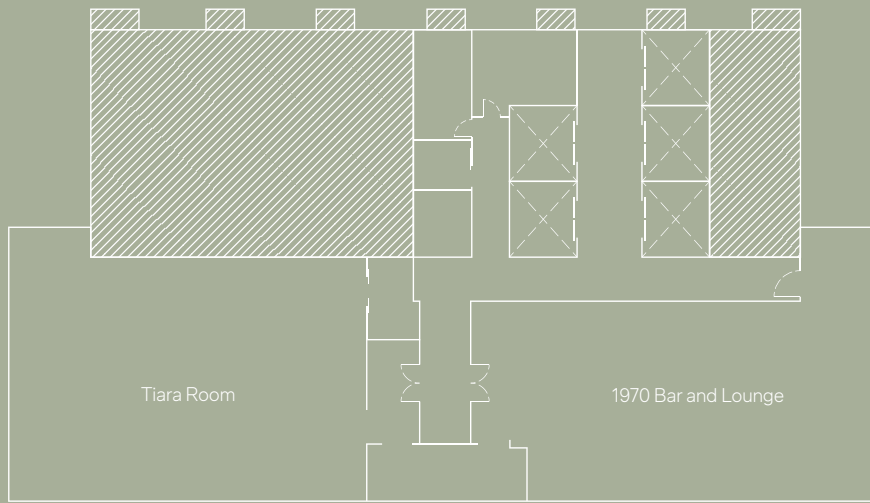
Outside Catering

Dusit delivers its renowned services to elevate home events and outside functions. From music and décor to unique gastronomy, chefs, and bartenders, we handle every detail.



Lumpini Lawn

Floor 39 M



Set high above the city, guests are welcomed with a breathtaking view of Lumpini Park at the Sky Lobby, where a personalised and seamless check-in awaits them alongside the exclusive Club Lounge reserved for Suite and Club-room guests. Meanwhile, Tiara Room - our sky function space - features a live cooking kitchen, wine cellar, and lounge area, which is ideal for unique creative events with the city as a backdrop.

Drawings are not to scale.

Event Spaces Capacities and Dimensions

Floor	Venue	Area	Dimension			Banquet/Event			Meeting/Convention			
			Sq. M.	Width M.	Length M.	Height M.	Banquet	Cocktail	Buffet	Classroom	U-Shape	Theatre
39 M	Tiara Room	150	8	15	4	30	50	40	24	26	60	18
3	Silom Room	130	15	9	4	60	80	60	63	45	120	36
	Silom 1	75	9	9	4	40	-	40	36	24	72	24
	Silom 2	55	7	9	4	30	-	30	27	18	54	18
	Library 1918	80	8	10	4	-	30	-	-	-	-	-
	Lumpini Room	250	10	27	4	120	150	100	108	50	200	72
	Lumpini Lawn	1,285	21	56	-	220	250	180	-	-	180	-
	Pre-function Area	625	-	-	4	-	150	-	-	-	-	-
2	Vimarn Ballroom	355	17	21	4	200	300	150	120	60	300	90
	Suriya Room	170	12	15	3	90	100	60	90	48	135	54
	Pre-function Area	230	-	-	4	-	100	-	-	-	-	-
1	Napalai Grand Ballroom	1,350	30	42	8	900	1,400	700	500	114	750	312
	Napalai 1	1,035	30	28	8	600	700	450	324	84	450	192
	Napalai 2	315	14	22	8	180	250	140	120	45	200	90
	Pre-function Area	575	-	-	4	-	300	-	-	-	-	-

Facilities and Event Spaces by Floor

Floor	Facilities	Event Spaces
Sky	Spire Rooftop Bar (100)	
39M	1970 Bar (80)	Tiara Room
39	Sky Lobby Club Lounge	
31 – 38	Club Rooms	
22 – 30	Premier Rooms	
8 – 21	Deluxe Rooms	
6	Kids Club	
5	Devarana Wellness Gym Pool Pool Bar	
3 <i>(connected to Roofpark)</i>		Lumpini Room Lumpini Lawn Library 1918 Silom Room
2		Vimarn Ballroom Suriya Room
1		Napalai Grand Ballroom Siri Room Event Studio
M	Cannubi by Umberto Bombana (60)	
L	Grand Lobby Grand Lobby Bar (88)	
G <i>(connected to Retail)</i>	Waterfall Terrace Pavilion (110) Dusit Gourmet (60)	

Accommodation

Floor	Room Type	Sq. M.	Keys	Floor	Room Type	Sq. M.	Keys
37	Dusit Thani Suite	250	1	22 – 30	Premier King	50	57
35	Rattanakosin Suite	150	1		Premier King Corner	50	8
28	Duplex Suite	120	2		Premier Twin Corner	50	8
Various	Club Suite	100	5	8 – 21	Deluxe King	50	89
8	Terrace Suite	170	1		Deluxe King Corner	50	12
31 – 38	Club King	50	44		Deluxe Twin Corner	50	13
	Club King Corner	50	8				
	Club Twin Corner	50	8				





*Overlooking the Southeast Corner
of Bangkok's Iconic Lumpini Park*

Dusit Central Park connects the city with its lush playground
and blurs the boundaries between urban and green spaces.


DUSIT
CENTRAL
PARK

dusit.com/centralpark

A More *Rewarding* Travel Experience

Dusit Gold, our frequent guest programme,
rewards and enriches your every stay at Dusit's
finest participating hotels and resorts worldwide.

Dusit
GOLD